

Vigor1000 Series

High Speed Gigabit Fiber Router

DrayTek

www.draytek.com

The Fiber deployment lets businesses and common people have fatter pipe of accessing global network. More Knowledge. More Opportunities. The architecture of Active Fiber deployed has the highest bandwidth potential.

Vigor1000 series is DrayTek's Fiber router for fiber-to-the-home (FTTH). Vigor1000 is designed with a single wall-mount fiber termination unit (FTU) with several active service-delivery modules. The module of Vigor1000 lets the operator to customize individual end-user service such as triple play services.

The mechanical "Click-On" concept provides extremely cost-save installation for the operator. IPTV, managed Ethernet, Voice-over-IP are available on the module CPE. The VigorACS SI centralized management offers the operator remote configuration and management with efficiency and quality.

The benefits of Vigor1000 series:

- From fiber termination to full triple play via modularized CPE
- TR-069 CPE can be remotely managed by VigorACS SI
- Efficient Installation and Management

Vigor1000 series is a Fiber router with VoIP and 802.11n WLAN for FTTx network. After Vigor1000 is mounted on the fiber tray, the bandwidth-consumed multimedia streaming and crystal-clear VoIP functionalities are realized through the Vigor1000's up-to-1000 Mbps (1 Gigabit) WAN throughput and advanced bandwidth management. There are three types of Vigor1000 series: Vigor1000, Vigor1000n, and Vigor1000Vn.

VoIP functionalities

The two FXS ports and one lifeline port on Vigor1000Vn are essential but suitable for use in office or in a small company, the platform developed by DrayTek can handle up to 6 SIP accounts for SIP-based voice calls. It is supported by up to two analog phones. The telephone directory allows you to define a mechanism to assign speed dial, rules for advanced management of prefixes and call forwarding on the various output lines in order to minimize costs (Least Cost Routing). Obviously, all classical functions such call handling, transfers, forwarding, three way conference, and call on hold are also supported.



Vigor1000 Series

High Speed Gigabit Fiber Router

DrayTek

www.draytek.com

Triple Play

Up to 1000Mbps fiber network, you can access highdefinition TV program and enjoy bandwidth-consuming multimedia streaming. Via high-speed Internet, it is also much easier for you to participate in digital learning program. At a home office or small office, you can utilize more interactive multimedia on Internet for your customers to learn more about your products or services. The four Gigabit Ethernet LAN Switch (10/100/1000 Mbps LAN Switch) facilitates bandwidth-consumed applications within your network. You can apply the rules of Session Limit, Bandwidth Limit, Port Rate Control, QoS control list, Ports Priority to different traffic type for better efficiency.

Advanced Security and Management for WLAN (Vigor1000n and Vigor1000Vn)

The integrated IEEE 802.11n WLAN network which offers users stable and reliable wireless connections for high speed multimedia and data traffic by means of WMM (WiFi Multimedia).

In addition to traditional wireless features, Vigor1000n and Vigor1000Vn offer some interesting features which are not normally available on similar products' category. One of these is the possibility to define up to three separate virtual access points, each one with its own SSID and specific security parameters. In this way for example, it's possible to create temporary profiles for the access of guests, without the need to use your regular access network's password.

Multi-task USB port

The USB port which you can insert the classic Internet key provided by your cellular network or the new 4G operators. The USB port can be used as backup when the Fiber network drops. You can also connect a USB-based printer to the USB port as Vigor1000 is embedded with USB printer server.

The USB port can be also used to connect a mass storage device. Storage resources are accessible through FTP and SMB / CIFS protocols, the system allows you to define up to 16 users, assigning write or read rights to each on network file system.

Advanced network features

As the number of public IP is dwindling, the migration from IPv4 to IPv6 is must for a networking device. DrayTek Vigor1000 is certified with IPv6 Ready. The DrayTek IPv6 development has been also certified by famous world-leading ISP/Telco.

▶ IPv6

- IPv6 WAN Setup
- IPv6 LAN Setup
- IPv6 Firewall Setup
- IPv6 Routing
- IPv6 Neighbour
- IPv6 TSPC Status
- ▶ IPv6 Management

IPv6 certification undergoing

The DoS/DDoS attack prevention, SPI, Port-redirectation, open port, and MAC address filter strengthens the security outside and inside the network. The two VPN tunnels are very convenient for tele-workers or home users to set up secure connection within Internet. DrayTek also implements Web Content Filtering (WCF) on Vigor1000 series.

The WCF can reduce the risk of exposure your network to civil or criminal liability. The WCF can increase the productivity of employees by blocking time-wasting web sites. The WCF can block access to dangerous Malware or virus-ridden web sites. If you are home user, the WCF can guard against unsuitable adult materials for children.

Vigor1000 Series

High Speed Gigabit Fiber Router

DrayTek

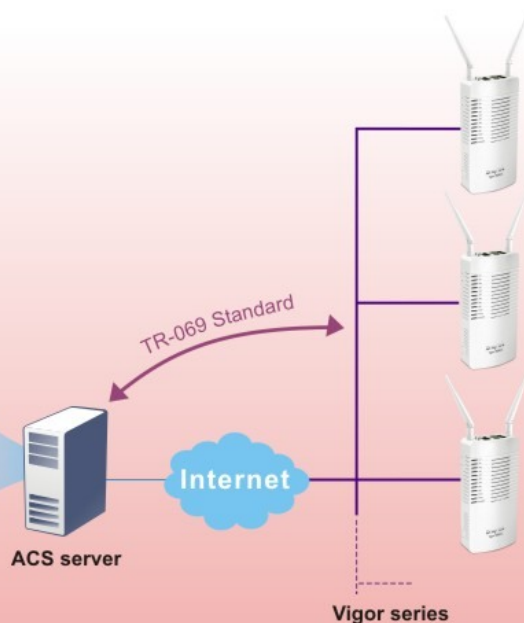
www.draytek.com

Personal & Interactive Multimedia



HDTV & Multimedia

Remote Management by VigorACS SI



Vigor1000 Series

High Speed Gigabit Fiber Router

DrayTek

www.draytek.com

IP Version

- IPv4
- IPv6

Support Hardware NAT

Switch

- 4 Gigabit LAN Ports
- Port-based VLAN
- Layer-2 (802.1p) QoS
- 802.1q Bridge
- IGMP Snooping
- Bind IP to MAC Address

WAN Protocol

- DHCP Client
- Static IP
- PPPoE
- PPTP
- L2TP
- 3.5G Backup

Firewall

- DMZ Host, Open Port, Port-redirection
- ACL (Access Control List)
- MAC Address Filter
- SPI (Stateful Packet Inspection)
- DoS/DDoS Prevention
- IP Address Anti-spoofing
- Web Syslog
- Logging via Syslog
- E-mail Alert
- URL Content Filter
- Web Content Filter
- IM/P2P Blocking

Network Feature

- DHCP Server
- Dynamic DNS
- NTP Client
- UPnP
- IGMP Proxy V2
- DNS Cache/Proxy
- Static Routing

Network Management

- Web-based User Interface (HTTP/HTTPS)
- Quick Start Wizard
- CLI (Command Line Interface, Telnet/SSH)
- Configuration Backup/Restore
- Built-in Diagnostic Function
- Firmware Upgrade via WUI
- 2-level User Management (admin/user)
- Administration Access Control
- Logging via Syslog
- Management Session Time out
- SNMP Management MIB-II
- TR-069

File System

- Support FAT32/FAT16 File System/NTFS
- Support FTP Function for File Sharing
- Support Samba for File Sharing
- BT Client

VPN

- 2 VPN Tunnels
- IPSec LAN to LAN, L2TP over IPSec and PPTP Remote Dial in
- Encryption : 3DES, AES
- Authentication : MD5, SHA-1
- IKE Authentication : Pre-shared Key
- DPD
- VPN Pass-through
- PPTP MPPE

Wireless AP (n model)

- IEEE802.11n Compliant
- 64/128-bit WEP
- WPA/WPA2
- Hidden SSID
- MAC Address Access Control
- WPS
- Wireless Client List
- WMM (Wi-Fi Multimedia)
- Wireless Isolation
- WDS (Wireless Distribution System)

Bandwidth Management

- Layer 2/3 QoS by Ethernet Type, VLAN ID, TCP/UDP Port, DSCP, ToS, Tag Priority
- QCL (QoS Control List)
- Bandwidth/Session Limitation

VoIP (V model)

- Protocol: SIP, RTP
- 6 SIP Registrars
- Supplemental Services :
 - Internal Call
 - Call Hold/Retrieve
 - Call Forwarding (Always, Busy)
 - DND (Do Not Disturb)
 - MWI (Message Waiting Indicator) (RFC-3842)
 - Holine
 - Call Barring
- Dial Plan :
 - Phone Book
 - Digit Map

Hardware Interface

- 4 Port 10/100/1000Base-Tx LAN Switch, RJ-45
- 1 x WAN, 100/1000Mbps, Tx1310nm, Rx1490/1550nm, Single Mode, SC, 20km
- 2 x FXS, RJ-11 (V Model)
- 2 x Detachable Antennas (n Model)
- 2 x USB Host 2.0 (for Printer, File System and 3.5G Backup only)
- 1 x Factory Reset Button
- 1 x Wireless on/off Button (n Model)
- 1 x WPS Button (n Model)

	VoIP	WLAN
Vigor1000Vn	•	•
Vigor1000n		•
Vigor1000		

* Firmware Upgradable

